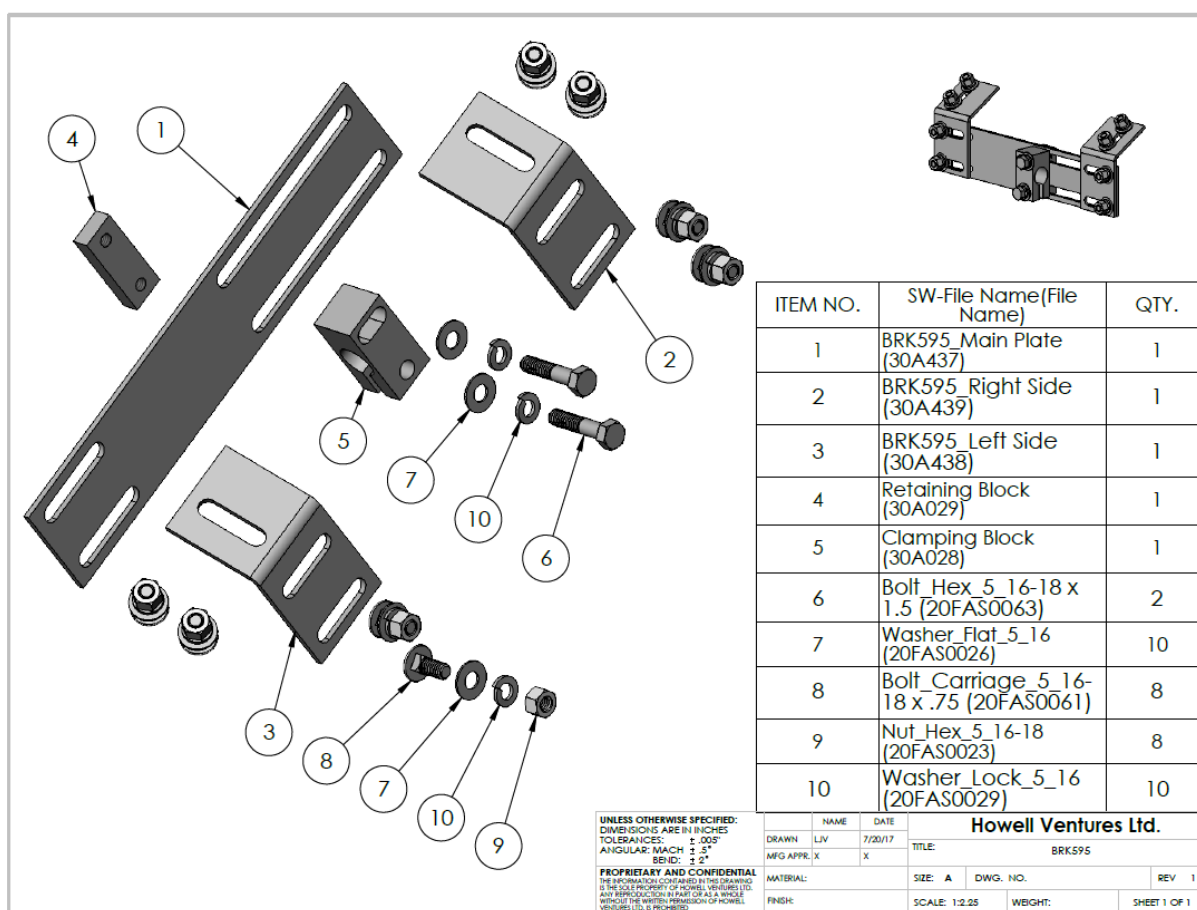


BRK595 Install

Introduction

The bracket is designed for 16+ Impresa because, the round tubing the column is constructed from has rotated on some Vehicles. The reason it can rotate is the tubing is held in by what Subaru refers to as a bushing at one end and crimps at the other. This bracket is to replace the knee bolster airbag.

Overview



***Note Carriage bolt placement is incorrect on part brake down, upper bolt leg bolt should be used on leg crossmember mount.**

Bracket preassembly

Place legs on top of crossmember mating double slotted side. Single slot is to be oriented closest to the edge. Crossmember orientation will depend on left or right mounted hand control. Longer slots on passenger side for left handed control or longer slots on driver side for right handed control.

Once oriented correctly loosely bolt assembly with carriage bolts pointed downward. **There are three carriage bolts per leg to mount to cross member.** Do not install carriage bolts in single slot currently. Please see overview section for reference.

Mount clamping block kit on bottom of crossmember on side with longer slots with supplied hardware. Leave loose until final adjustments have been made.

Bracket placement

Knee bolster air bag must be removed prior to installing bracket. Remove using instructions in *appendix A* and shunt using SH103. SH103 instructions included in package.

The stud on the dash structure is reused to mount the bracket using the single slot leg. Position by sliding on crossmember and tighten crossmember carriage bolts once mounted with OEM stud.

Remaining two carriage bolts are supplied to mount to dash using OEM holes. The holes will have to be drilled out to fit the 5/16ths bolts.

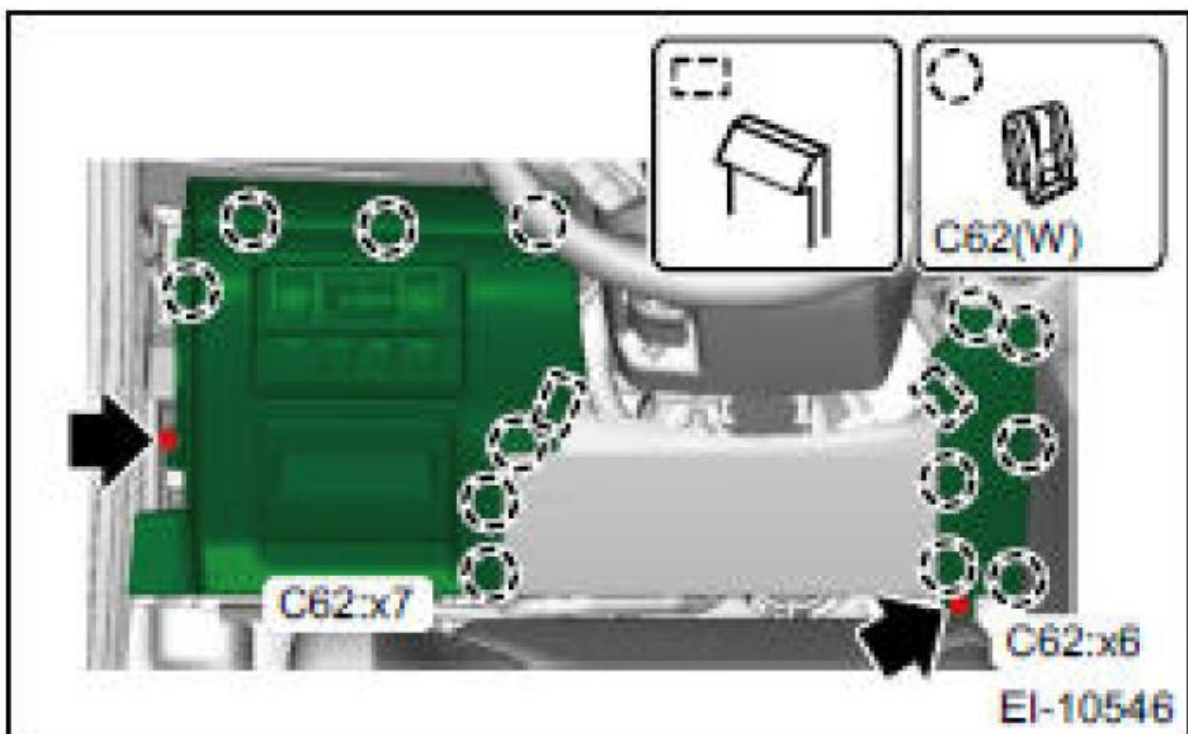
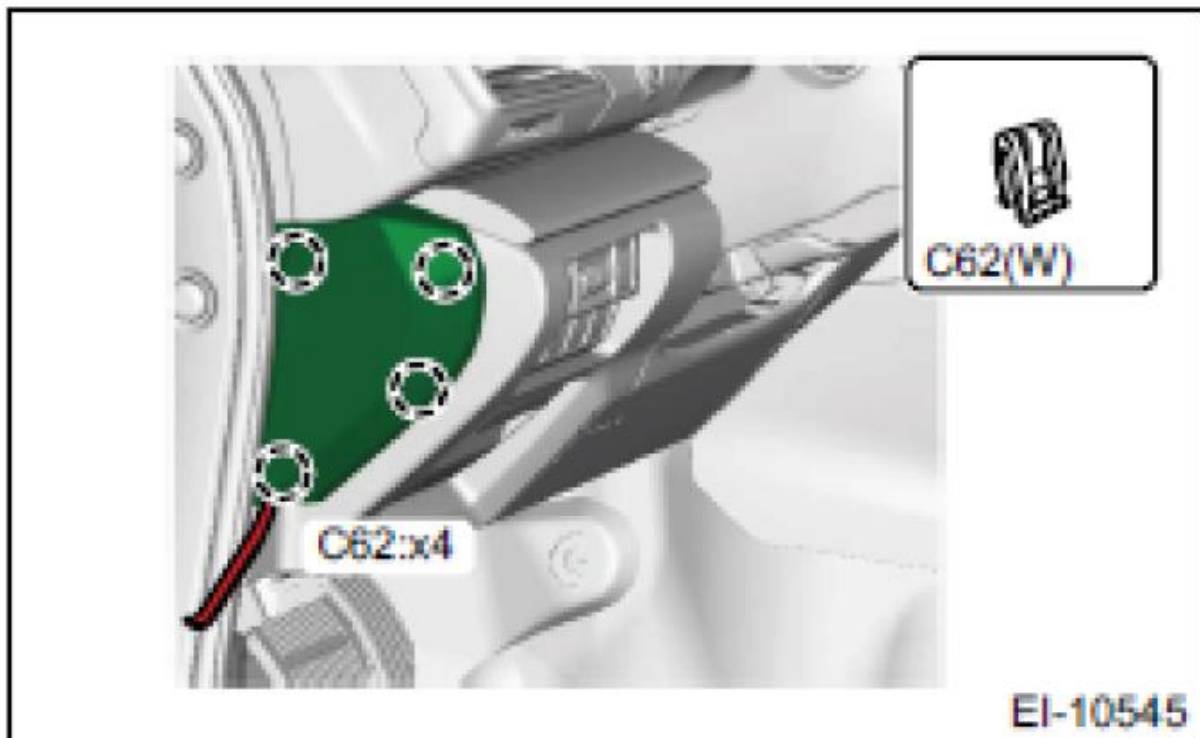
Clamping block

proceed regular hand control install. After support rod position and modification is complete the clamping block can now be tightened

If there are any questions about this install, please
contact Us! **1-888-370-5050**



Appendix A



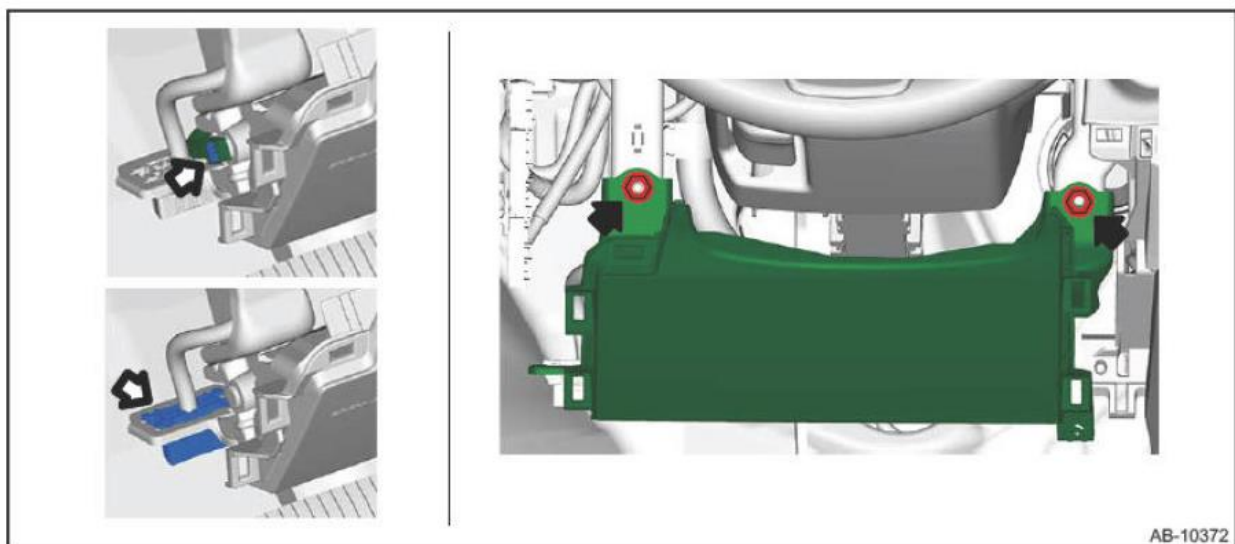
REMOVAL [Knee Airbag Module]

CAUTION:

- Before handling the airbag system components, refer to "CAUTION" of "General Description" in "AIRBAG SYSTEM". Ref. to AIRBAG SYSTEM>General Description>CAUTION.
- Do not allow harness and connectors to interfere or get tangled up with other parts.

1. Turn the ignition switch to OFF.
2. Disconnect the ground cable from battery and wait for at least 60 seconds before starting work. Ref. to REPAIR CONTENTS>NOTE>BATTERY .
3. Remove the cover assembly - instrument panel LWR driver. Ref. to EXTERIOR/INTERIOR TRIM>Instrument Panel Lower Cover>REMOVAL .
4. Remove the nuts to remove the knee airbag module and disconnect the harness connector. Ref. to AIRBAG SYSTEM>Airbag Connector>PROCEDURE>KNEE AIRBAG MODULE AND PASSENGER'S LAP SEAT BELT PRETENSIONER.
 1. Disconnect the connector of knee airbag module. Ref. to AIRBAG SYSTEM>Airbag Connector>PROCEDURE>KNEE AIRBAG MODULE AND PASSENGER'S LAP SEAT BELT PRETENSIONER.
 2. Remove the data link connector.
 3. Remove the nuts, and remove the knee airbag module.

Fig 9: Locating Knee Airbag Module Nuts



Appendix B

